

Supplements

Table S1 Characteristics of ACS inpatients who underwent PCI

Characteristics and medication	Postpolicy (n=8982)	Prepolicy (n=22778)	Student's t/ χ^2	p value
Diagnostic classification				
Unstable angina pectoris	3933(43.79%)	9691(42.55%)		
Non-ST-segment elevation MI	2054(22.87%)	5351(23.49%)	4.61	0.2026
ST-segment elevation MI	2966(33.02%)	7649(33.58%)		
Undetermined	29(0.32%)	87(0.38%)		
Age, years [†]	65.03 (11.61)	65.52 (11.52)	4.28	<.0001
Age group, years				
<50	925 (10.30%)	2097 (9.21%)		
50-59	1587 (17.67%)	4082 (17.92%)		
60-69	3209 (35.73%)	8323 (36.54%)	28.56	<.0001
70-79	2343 (26.09%)	5600 (24.59%)		
≥80	918 (10.21%)	2676 (11.74%)		
Sex				
Male	6786 (75.55%)	17223 (75.60%)	0.01	0.9038
Female	2196 (24.45%)	5555 (24.39%)		
Medical insurance				
Yes	7935 (88.34%)	20310 (89.16%)		
No	1047 (11.66%)	2468 (10.84%)	4.42	0.0356
Medical history				
Diabetes	2783 (30.98%)	7511 (32.97%)	11.65	0.0006
Hypertension	5271 (58.68%)	14451 (63.44%)	61.98	<.0001
Hyperlipidaemia	2742 (30.53%)	76.38 (33.53%)	26.43	<.0001
Stroke	81 (0.90%)	265 (1.16%)	4.09	0.0431
Chronic kidney disease	844 (9.40%)	2391 (10.50%)	8.53	0.0035
Chronic obstructive pulmonary disease	251 (2.79%)	764 (3.35%)	6.52	0.0107
Previous MI	646 (7.19%)	2028 (8.90%)	24.46	<.0001
Previous CABG	264 (2.94%)	1002 (4.40%)	35.87	<.0001
Hospital level				
Tertiary hospital	7984 (88.89%)	20788 (91.26%)	42.62	<.0001
Secondary hospital	998 (11.11%)	1990 (8.74%)		
NYHA or Killip functional classification [‡]				
I	2492 (60.59%)	4350 (55.68%)		
II or III	1499 (36.45%)	3283 (42.03%)	37.08	<.0001
IV	122 (2.96%)	179 (2.29%)		
Number of coronary stents implanted [‡]				
1	4244 (73.96%)	7897 (74.36%)		
2	1134 (19.76%)	2257 (21.25%)	35.57	<.0001
3	290 (5.05%)	402 (3.79%)		
4 or more	70 (1.22%)	66 (0.60%)		

Characteristics and medication	Postpolicy (n=8982)	Prepolicy (n=22778)	Student's t/ χ^2	p value
At least one bid-winning stent [‡]				
Yes	6086 (86.52%)	8950 (55.67%)	2049.02	<.0001
No	948 (13.48%)	7127 (44.33%)		
Medication prescribed at outpatient visits during the year after PCI				
Aspirin	6255 (69.64%)	15739 (69.10)	0.89	0.3459
Clopidogrel	4691 (52.23%)	12246 (53.76)	6.10	0.0135
Metoprolol	4777 (53.18%)	13051 (57.30)	44.24	<.0001
Ticagrelor	4037 (44.95%)	11365 (49.89)	63.17	<.0001
Atorvastatin	5392 (60.03%)	14113 (61.96)	10.10	0.0015
Ezetimibe	1556 (17.32%)	2799 (12.29)	138.04	<.0001
Sacubitril/valsartan	2342 (26.07%)	2210 (9.70)	1406.29	<.0001
Trimetazidine dihydrochloride	443 (4.93%)	1918 (8.42)	113.91	<.0001
Pravastatin sodium	750 (8.35%)	2387 (10.48)	32.81	<.0001
Nicorandil	502 (5.59%)	694 (3.05)	114.86	<.0001
Isosorbide dinitrate	1409 (15.69%)	4260 (18.70)	39.94	<.0001
Rosuvastatin	2296 (25.56%)	4495 (19.73)	130.17	<.0001
Others	541(6.02%)	1175 (5.16)	9.42	0.0021

† Age is presented as the mean (SD) and was compared between post- and prepolicy cohorts by Student's t test; all other variables and age groups are presented as n (%) and were compared between the post- and prepolicy cohorts by the χ^2 test.

‡ There were missing data for these variables.

Table S2 Characteristics of the two PS-matched cohorts

Characteristics	Postpolicy (n=4098)	Prepolicy (n=4098)	Student's t/ χ^2	p value
Age, years [†]	64.49 (12.01)	64.48 (12.02)	-0.05	0.9597
Age group, years				
<60	1261 (30.77%)	1260 (30.75%)	0.05	0.9746
60-69	1424 (34.75%)	1433 (34.97%)		
≥70	1413 (34.48%)	1405 (34.29%)		
Sex				
Male	3173 (77.43%)	3173(77.43%)	0.00	1.0000
Female	925 (22.57%)	925 (22.57%)		
Medical insurance				
Yes	3588 (87.55%)	3591 (87.63%)	0.01	0.9199
No	510 (12.45%)	507 (12.37%)		
Previous medical history				
Diabetes	1216 (29.67%)	1216 (29.67%)	0.00	1.0000
Hypertension	2329 (56.83%)	2329 (56.83%)	0.00	1.0000
CABG	86 (2.10%)	86 (2.10%)	0.00	1.0000
Hospital level				
Tertiary hospital	3588 (87.55%)	3588 (87.55%)	0.00	1.0000
Secondary hospital	1225 (7.29%)	1461 (6.41%)		
Severity of heart function				
NYHA or Killip functional classification at IV	108 (2.64%)	108 (2.64%)	0.00	1.0000
NYHA or Killip functional classification not at IV	3990 (97.36%)	3990 (97.36%)		

[†] Age is presented as the mean (SD) and was compared between the post- and prepolicy cohorts by Student's t test; all other variables and age groups are presented as n (%) and were compared between the post- and prepolicy cohorts by the χ^2 test.

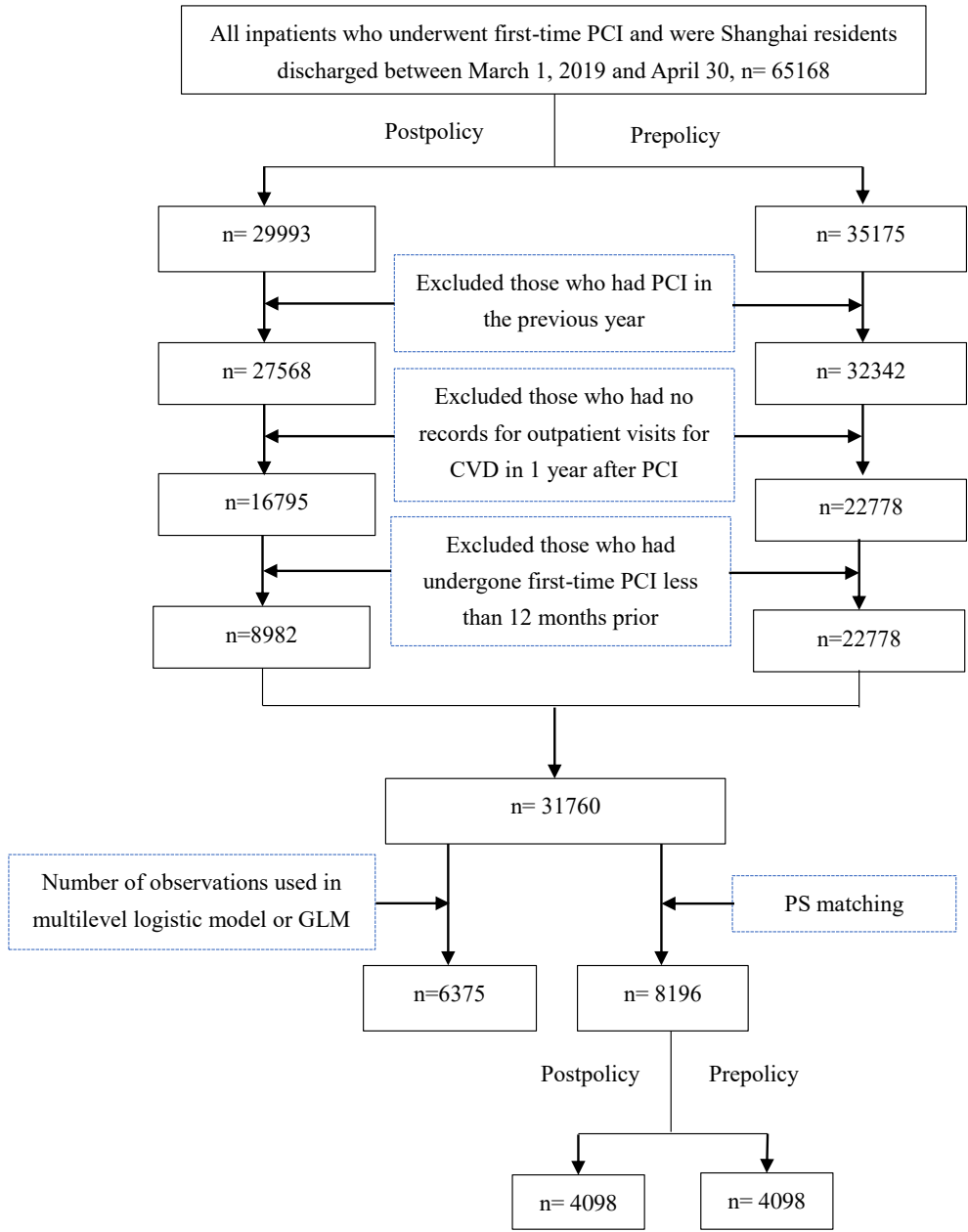
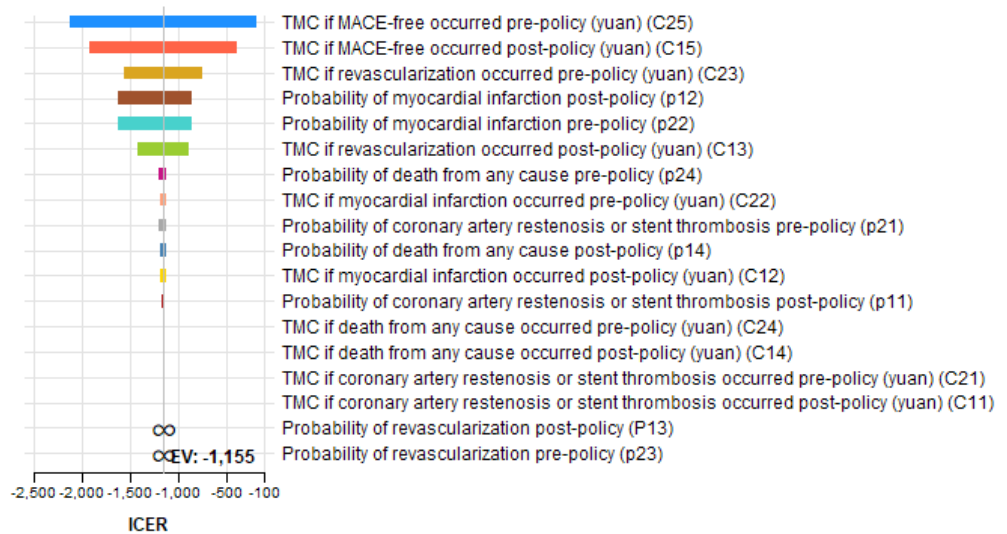
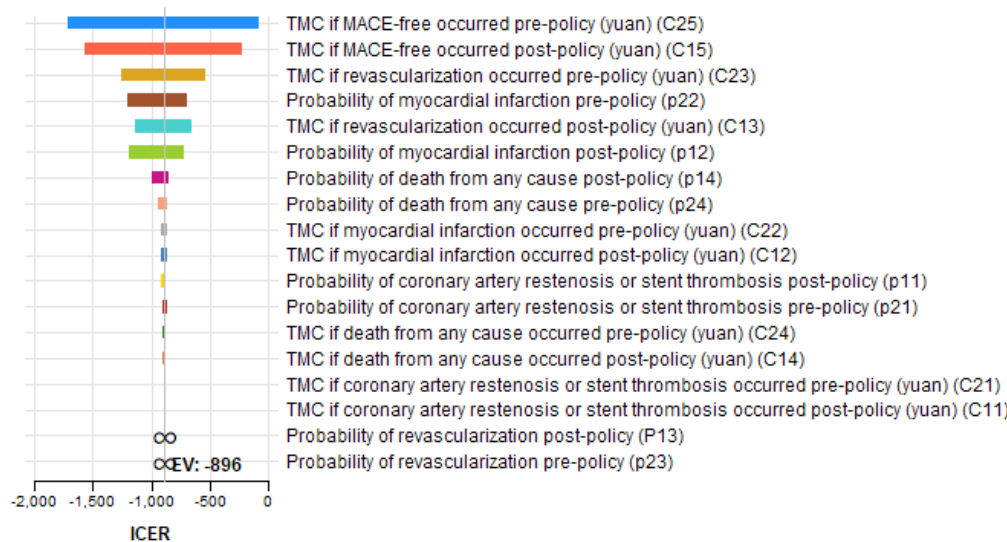


Figure S1 Data screening process used in the study



A. Based on real-world data †



B. Based on PS-matched data †

† TMC: total medical costs

Figure S2 Tornado diagram: ICER (postpolicy vs. prepolicy)

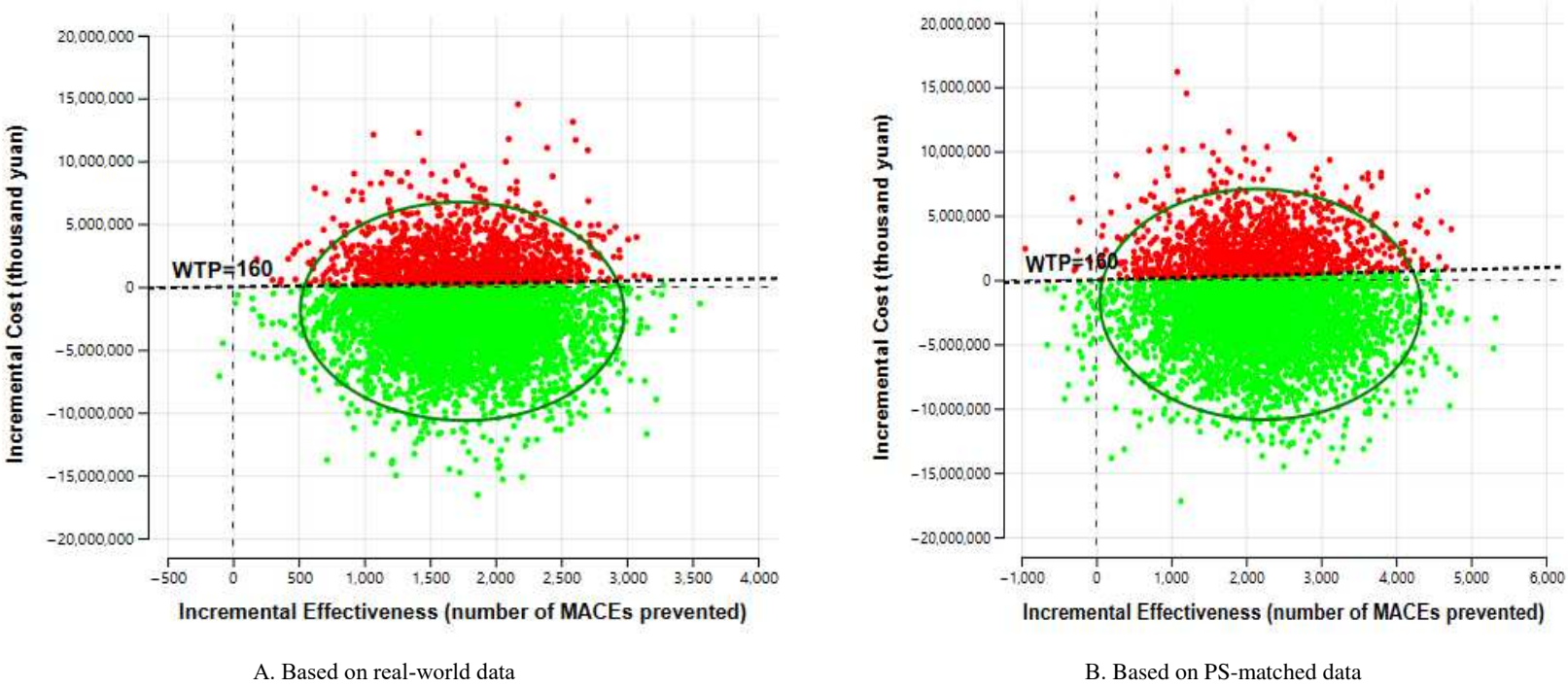


Fig. S3 ICE scatterplot (postpolicy vs. prepolicy)

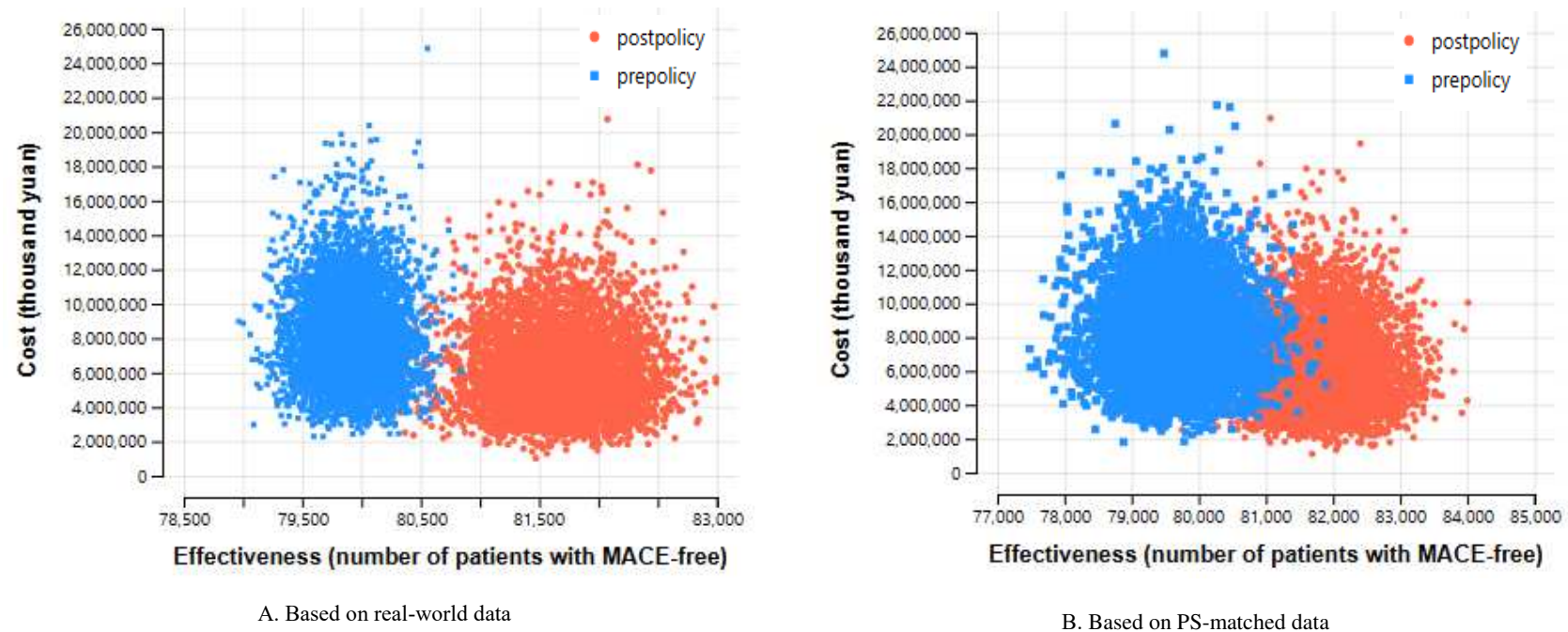


Figure S4 Cost-effectiveness scatterplot (postpolicy vs. prepolicy)